

SPECIFICATION SHEET

VERSION 1,00 **VERSION DATE** 19/09/22 **PRINT DATE** 03/05/24

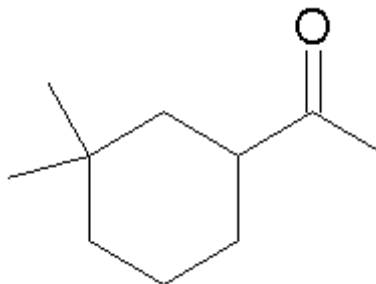
PRODUCT HERBAC IFF
APPLICATIONS Industrial raw material not intended for direct use.
IUPAC NAME 3,3-DIMETHYL CYCLOHEXYL METHYL KETONE
SYNONYMS ERBACH, HERBAROM, HERBATONE

FORMULA C10 H18 O
MOLECULAR WEIGHT 154,00
CAS 25304-14-7

EINECS 246-799-1

TARIFF NUMBER 2914290090

REACH REGISTRATION NO. 01-2120739843-46



SPECIFICATIONS

ASPECT AT 20°C	CLEAR MOBILE LIQUID
COLOUR	COLORLESS
ODOUR	HERBAL, WOODY, MINTY, CAMPHORACEOUS
TASTE	
DENSITY AT 20°C (g / ml)	0,896 - 0,902
DENSITY 25/25	0,895 - 0,901
REFRACTIVE INDEX nD20	1,4500 - 1,4550
REFRACTIVE INDEX nD25	-
OPTICAL ROTATION (°)	/
BOILING POINT (°C)	-
MELTING POINT (°C)	
FLASH POINT (°C)	70,00
ASSAY (% GC)	MAJOR PEAK 72-86%; SUM > 90%
ACID VALUE (mg KOH/g)	-
SOLUBILITY	INSOLUBLE IN WATER
VAPOUR PRESSURE	NOT DETERMINED
OTHER SOLUBILITIES	SOLUBLE IN ETHANOL

OTHER TECHNICAL DATA

STABILITY AND STORAGE

KEEP IN TIGHTLY CLOSED CONTAINER IN A COOL AND DRY PLACE, PROTECTED FROM LIGHT. WHEN STORED FOR MORE THAN 24 MONTHS, QUALITY SHOULD BE CHECKED BEFORE USE.

WE BELIEVE THE ABOVE INFORMATION TO BE CORRECT BUT WE DO NOT PRESENT IT AS ALL INCLUSIVE AND AS SUCH SHOULD BE USED AS A GUIDE. IT IS THE SOLE RESPONSIBILITY OF THE RECEIVER OF OUR PRODUCT TO COMPLY WITH EXISTING REGULATIONS AND INSTRUCTIONS.