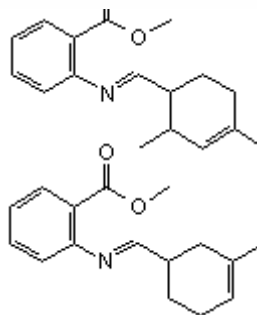


SPECIFICATION SHEET

VERSION 2,00 **VERSION DATE** 13/09/13 **PRINT DATE** 22/02/20

PRODUCT SCHIFF BASE, TRIPLAL/METHYL ANTHRANILATE
APPLICATIONS Raw material for industrial use intended for the manufacture of fragrances.
IUPAC NAME SCHIFF BASE, TRIPLAL/METHYL ANTHRANILATE
SYNONYMS VERTOSINE, LIGANTRAAL

FORMULA C17 H21 N O2
MOLECULAR WEIGHT 271,36
CAS 68738-99-8
CAS 2 68845-02-3
EINECS 272-124-5
EINECS 2 272-449-2
FEMA -
TARIFF NUMBER 2929900090



REACH REGISTRATION NO. Exempt from registration (imported/manufactured < 1 ton/year)

SPECIFICATIONS

ASPECT AT 20° C VISCOUS LIQUID/ SOLID
COLOUR YELLOW TO ORANGE
ODOUR GREEN, FLORAL, ALDEHYDIC, CITRUS
TASTE
DENSITY A 20° C (g / ml) 1,077 - 1,094
DENSITY 25/25 -
REFRACTIVE INDEX nD20 1,6020 - 1,6080
REFRACTIVE INDEX nD25 -
OPTICAL ROTATION (°) /
BOILING POINT (°C) -
MELTING POINT (°C) -
FLASH POINT (°C) 101,00
ASSAY (% GC) SUM > 80%
ACID VALUE (mg KOH/g)
SOLUBILITY INSOLUBLE IN WATER
VAPOUR PRESSURE NOT DETERMINED
OTHER SOLUBILITIES SOLUBLE IN ETHANOL

OTHER TECHNICAL DATA Recommended for citrus peel and floral notes as broom, mimosa, gardenia, honeysuckle. Stable in many media. Useful where the aldehyde would be unstable because the molecules break slowly releasing it.

STABILITY AND STORAGE

KEEP IN TIGHTLY CLOSED CONTAINER IN A COOL AND DRY PLACE, PROTECTED FROM LIGHT. WHEN STORED FOR MORE THAN 24 MONTHS, QUALITY SHOULD BE CHECKED BEFORE USE.
 IT CONTAINS 0,2% APROX. OF TOCOPHEROL

WE BELIEVE THE ABOVE INFORMATION TO BE CORRECT BUT WE DO NOT PRESENT IT AS ALL INCLUSIVE AND AS SUCH SHOULD BE USED AS A GUIDE.
 IT IS THE SOLE RESPONSIBILITY OF THE RECEIVER OF OUR PRODUCT TO COMPLY WITH EXISTING REGULATIONS AND INSTRUCTIONS.