

## SPECIFICATION SHEET

**VERSION** 2,00 **VERSION DATE** 19/09/22 **PRINT DATE** 16/04/24

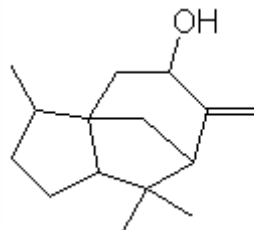
**PRODUCT** CEDROL TEXAS IFF NATURAL  
**APPLICATIONS** Industrial raw material not intended for direct use.  
**IUPAC NAME** CEDROL  
**SYNONYMS**

**PLANT OF ORIGIN**  
**PART OF THE PLANT**

**FORMULA** C<sub>16</sub> H<sub>28</sub> O  
**MOLECULAR WEIGHT** 236,40  
**CAS** 77-53-2

**EINECS** 201-035-6

**FEMA** -  
**TARIFF NUMBER** 2906190090



**REACH REGISTRATION NO.** 01-2120790208-49

## SPECIFICATIONS

<b>ASPECT AT 20°C</b>	CLEAR MOBILE LIQUID/CRYSTALLINE SOLID
<b>COLOUR</b>	COLORLESS TO PALE YELLOW
<b>ODOUR</b>	WOODY, CEDAR, DRY
<b>TASTE</b>	
<b>DENSITY AT 20°C (g / ml)</b>	-
<b>DENSITY 25/25</b>	-
<b>REFRACTIVE INDEX n<sub>D</sub>20</b>	1,5080 - 1,5140
<b>REFRACTIVE INDEX n<sub>D</sub>25</b>	-
<b>OPTICAL ROTATION (°)</b>	/
<b>BOILING POINT (°C)</b>	-
<b>MELTING POINT (°C)</b>	79°C
<b>FLASH POINT (°C)</b>	81,00
<b>ASSAY (% GC)</b>	SUM:73-85;CEDROL:60-75;WIDDROL:6-13
<b>ACID VALUE (mg KOH/g)</b>	-
<b>SOLUBILITY</b>	INSOLUBLE IN WATER
<b>VAPOUR PRESSURE</b>	0,0006666 hPa (calculated)
<b>OTHER SOLUBILITIES</b>	SOLUBLE IN ETHANOL

### OTHER TECHNICAL DATA

## STABILITY AND STORAGE

KEEP IN TIGHTLY CLOSED CONTAINER IN A COOL AND DRY PLACE, PROTECTED FROM LIGHT. WHEN STORED FOR MORE THAN 24 MONTHS, QUALITY SHOULD BE CHECKED BEFORE USE.  
ASSURE COMPLETE MELTING BEFORE USE.

WE BELIEVE THE ABOVE INFORMATION TO BE CORRECT BUT WE DO NOT PRESENT IT AS ALL INCLUSIVE AND AS SUCH SHOULD BE USED AS A GUIDE.  
IT IS THE SOLE RESPONSIBILITY OF THE RECEIVER OF OUR PRODUCT TO COMPLY WITH EXISTING REGULATIONS AND INSTRUCTIONS.